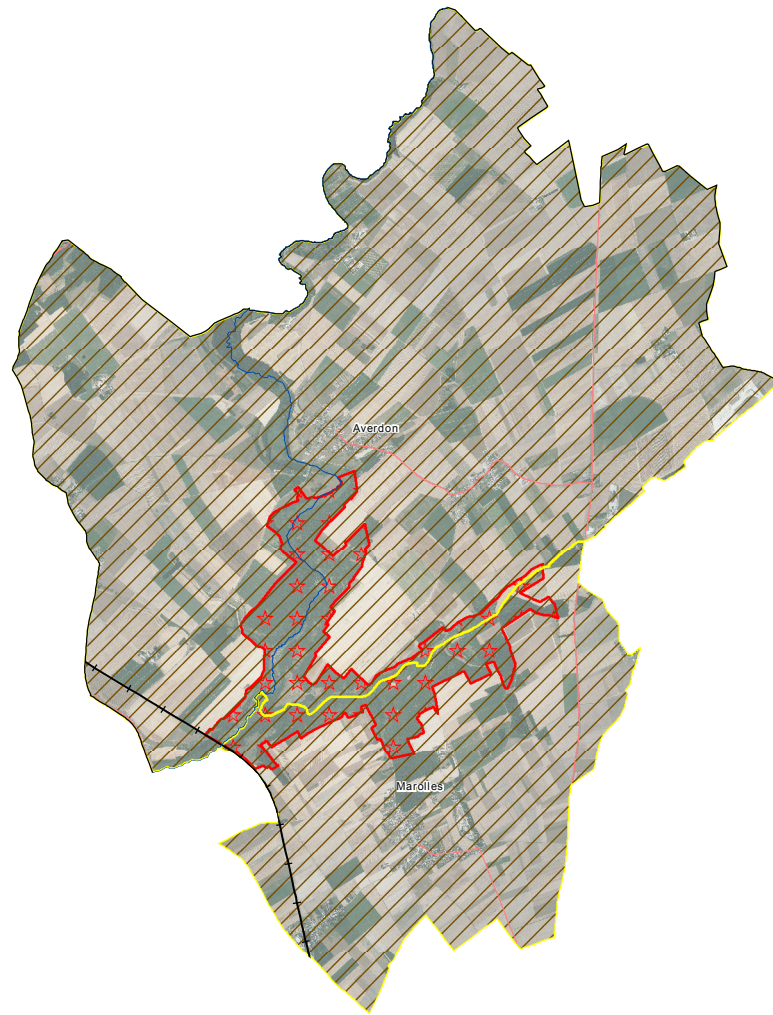
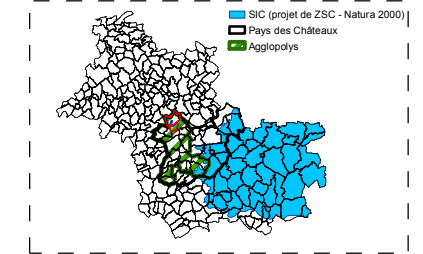


4.1.1.A Protections réglementaires



Averdon et Marolles



Protections réglementaires

- Réserve Naturelle Nationale
- Réserve Naturelle Régionale
- Arrêté de Protection de Biotope
- Réserve Nationale de Chasse et de Faune Sauvage

Natura 2000

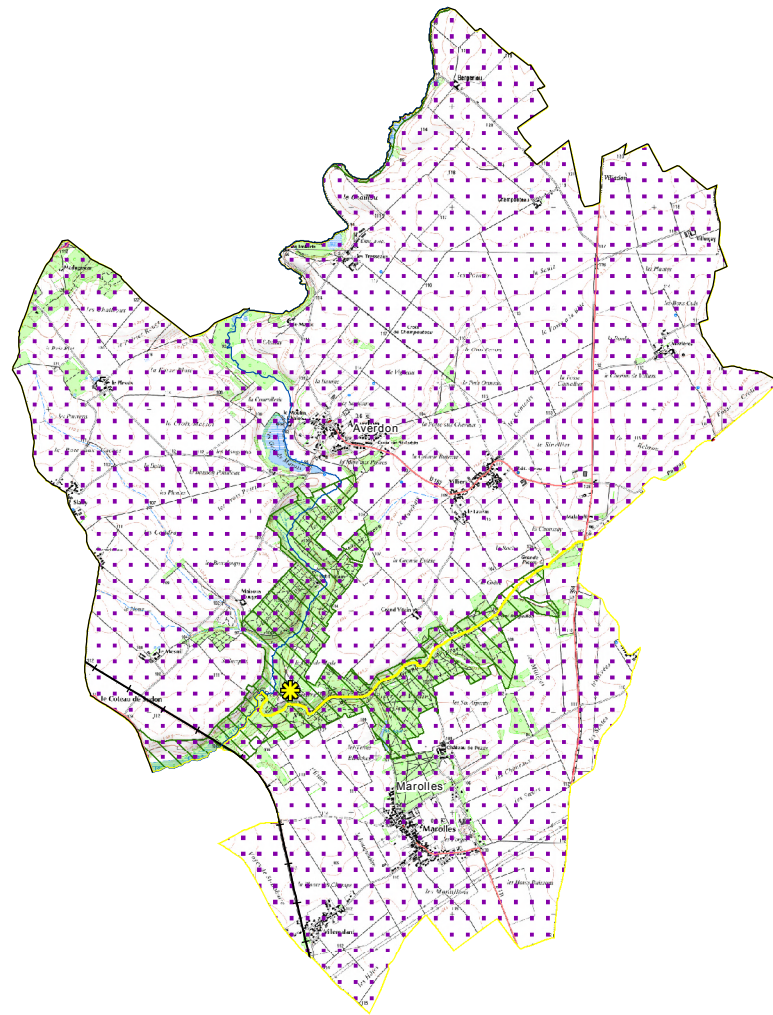
- ZPS
- ZSC

Référentiels

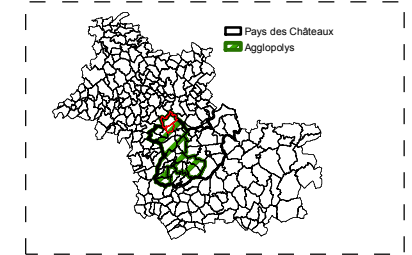
- Limite de commune
- Cours d'eau
- Autoroute
- Ex-nationale
- Départementale
- Voie ferrée principale

750m



4.1.1.B Zonages d'alerte et protections hors cadre réglementaire








Averdon et Marolles








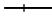
Zonages d'alerte

-  ZICO
-  ZNIEFF1
-  ZNIEFF2

Protections hors cadre réglementaire

-  Réserve Biologique Domaniale
-  Réserve de Chasse et de Faune Sauvage
-  Site CSLC
-  Site CPNRC
-  Site CDPNE

Référentiels

-  Limite de commune
-  Cours d'eau
-  Autoroute
-  Ex-nationale
-  Départementale
-  Voie ferrée principale

750m